



---

## New Construction

PROGRESS UPDATE

May 2023

---

# Southeast Pre K-12 School

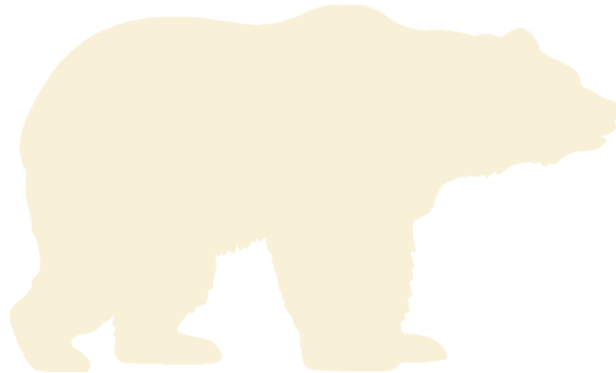




---

## TABLE OF CONTENTS

3-10      PROJECT SUMMARY / PHOTOS



## PROJECT SUMMARY

### Site Development & Landscaping

#### May 2023 Progress

- Site
- Utilities
  - Continue Site Lighting Conduit– 75%
  - Underground Power Conduit– 75%
  - Underground Data Conduit– 90%
  - Light Pole Bases Installation– 80%
  - Water Line Installation– 80%

#### Upcoming Progress

- Continue Installing Water Line
- Begin Installing Pumphouse Water Lines
- Continue Installing Underground Power Conduit



## PROJECT SUMMARY

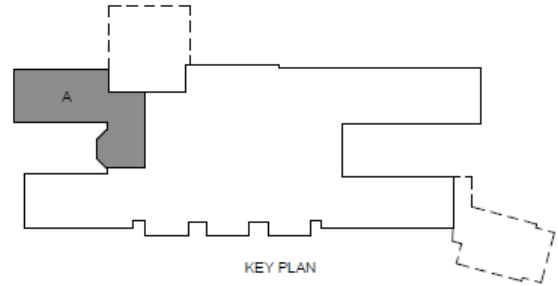
### Area A

#### May 2023 Progress

- Second Floor Bearing CMU— 100%
- First Floor MEP Overhead Ongoing— 80%
- Interior Metal Framing— 90%
- Exterior Wood Blocking Ongoing— 95%
- Set Hollow Metal Frames— 50%

#### Upcoming Progress

- Setting Hollow Metal Frames
- Interior Metal Framing
- Exterior Wood Blocking
- First Floor MEP Overhead Rough-in
- Install Trusses



## PROJECT SUMMARY

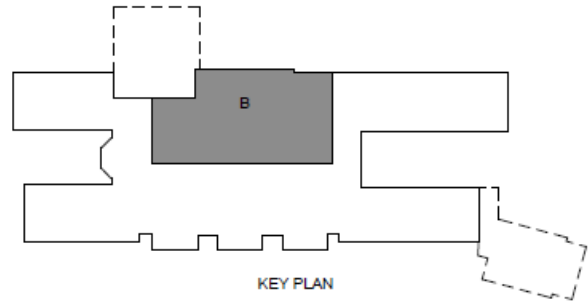
### Area B

#### May 2023 Progress

- Foundations– 95%
- Below Grade CMU– 80%
- Branch Conduit– 80%
- Pour Partial Slab on Grade– 75%
- Set Steel– 85%

#### Upcoming Progress

- Continue Bearing CMU
- Branch Conduit
- Continue Slab on Grade
- Set Precast Planks
- Continue Setting Steel

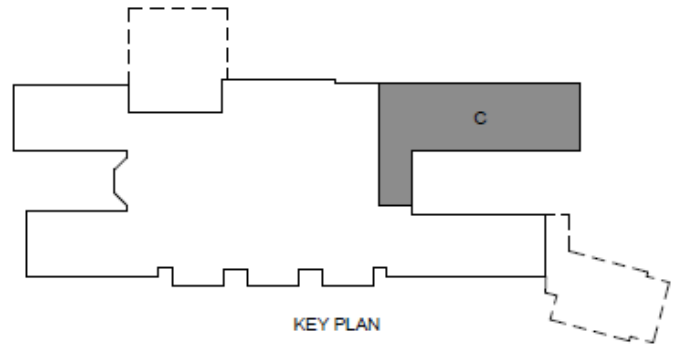


## PROJECT SUMMARY

### Area C

#### May 2023 Progress

- Second Floor CMU Bearing– 55%
- First Floor MEP Overhead Ongoing– 80%
- Interior Metal Framing– 90%



#### Upcoming Progress

- Second Floor CMU Bearing
- First Floor MEP Overhead Rough-in
- Interior Metal Framing

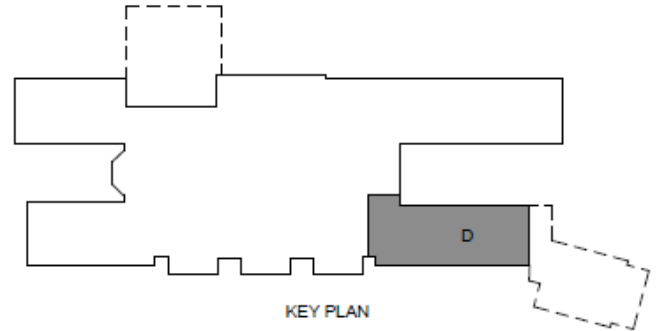


## PROJECT SUMMARY

### Area D

#### May 2023 Progress

- Exterior Bearing CMU – 30%
- Set Hollow Metal Frames– 100%



#### Upcoming Progress

- Exterior Bearing CMU
- MEP Rough – In



## PROJECT SUMMARY

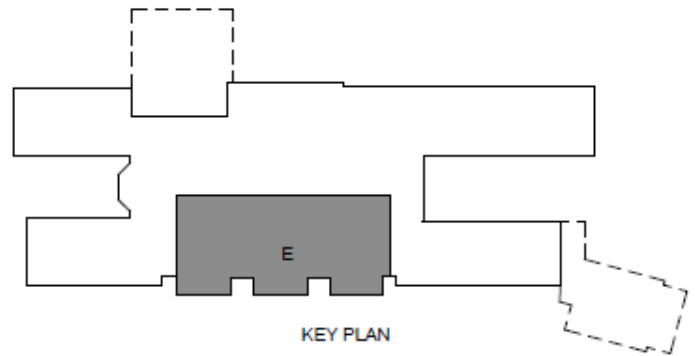
### Area E

#### May 2023 Progress

- CMU to Bearing– 70%
- MEP Overhead Rough-in– 70%

#### Upcoming Progress

- Continue CMU to Bearing
- Slab on Grade Preparation
- Continue MEP Overhead Rough-in





## PROJECT SUMMARY

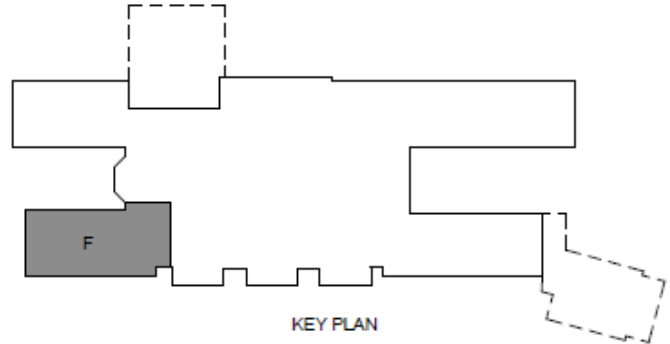
### Area F

#### May 2023 Progress

- Exterior Bearing CMU – 90%

#### Upcoming Progress

- Continue Bearing CMU
- Install Trusses
- Set Steel



## PROJECT SUMMARY

### Area G

#### May 2023 Progress

- First Floor Bearing CMU— 10%

#### Upcoming Progress

- First Floor CMU Bearing
- MEP Rough In

