



---

## New Construction

PROGRESS UPDATE

June 2023

---

# Southeast Pre K-12 School





## PROJECT SUMMARY

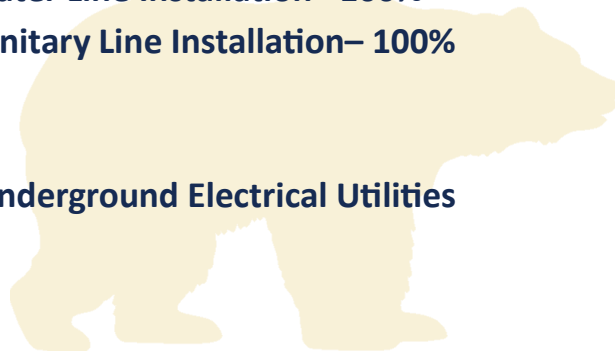
### Site Development & Landscaping

#### June 2023 Progress

- Site
- Utilities
  - Continue Site Lighting Conduit– 75%
  - Underground Power Conduit– 75%
  - Underground Data Conduit– 90%
  - Light Pole Bases Installation– 80%
  - Water Line Installation– 100%
  - Pumphouse Water Line Installation– 100%
  - Pumphouse Sanitary Line Installation– 100%

#### Upcoming Progress

- Continue Installing Underground Electrical Utilities





## PROJECT SUMMARY

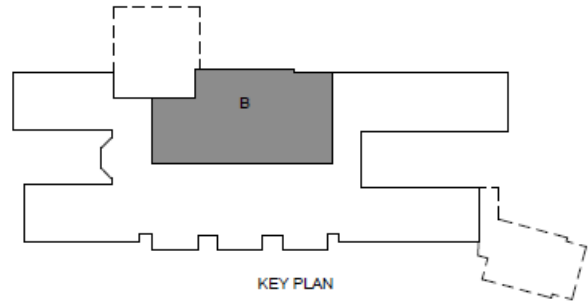
### Area B

#### June 2023 Progress

- Foundations– 95%
- Below Grade CMU– 80%
- Branch Conduit– 80%
- Pour Partial Slab on Grade– 70%
- Structural Steel– 75%
- Bearing CMU– 65%
- Precast Planks– 95%

#### Upcoming Progress

- Continue Bearing CMU
- Branch Conduit
- Continue Slab on Grade
- Continue Setting Steel

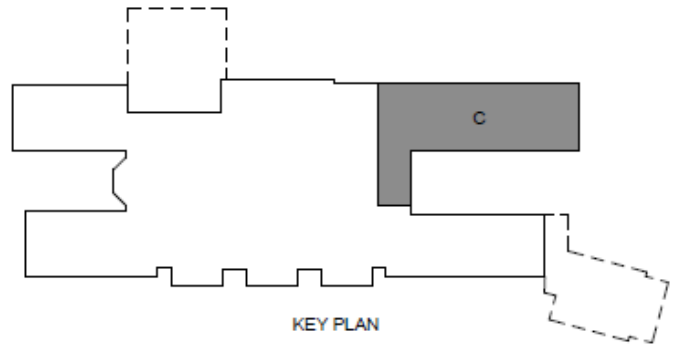


## PROJECT SUMMARY

### Area C

#### June 2023 Progress

- Second Floor CMU Bearing– 90%
- First Floor MEP Overhead Ongoing– 80%
- First Floor Interior Framing– 100%



#### Upcoming Progress

- Second Floor CMU Bearing
- First Floor MEP Overhead Rough-in
- Install Trusses
- Set Steel



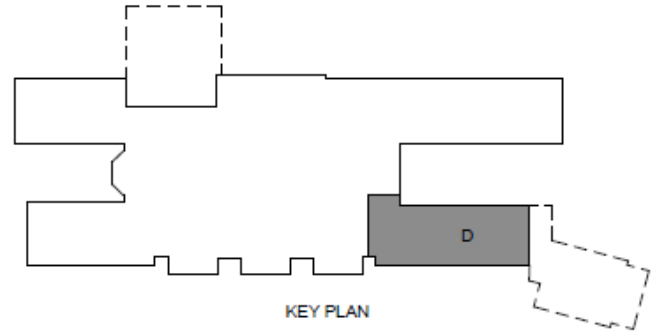


## PROJECT SUMMARY

### Area D

#### June 2023 Progress

- Exterior Bearing CMU – 30%
- Set Hollow Metal Frames– 100%



#### Upcoming Progress

- Exterior Bearing CMU
- MEP Rough – In



## PROJECT SUMMARY

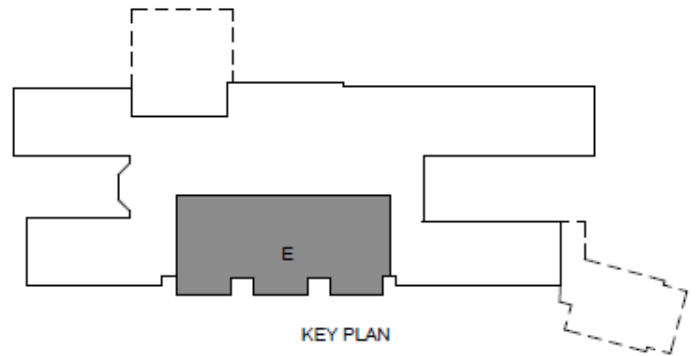
### Area E

#### June 2023 Progress

- CMU to Bearing– 80%
- MEP Overhead Rough-in– 80%

#### Upcoming Progress

- Continue CMU to Bearing
- Set Structural Steel
- Slab on Grade Preparation
- Continue MEP Overhead Rough-in





## PROJECT SUMMARY

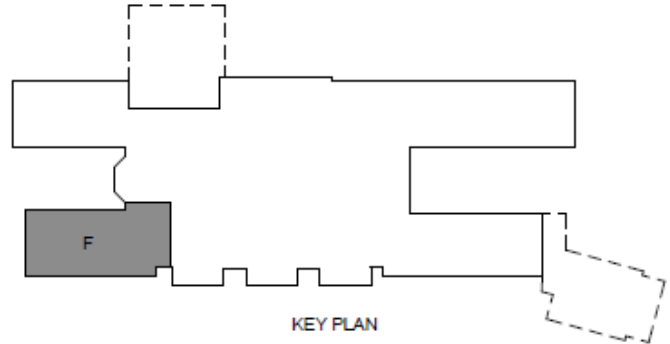
### Area F

#### June 2023 Progress

- Exterior Bearing CMU – 100%
- Wiring– 80%
- Interior Metal Framing– 80%
- Roof Blocking– 50%
- Set Metal Deck– 95%

#### Upcoming Progress

- Framing Between Trusses
- Roof Blocking
- Interior Metal Framing
- Set Metal Deck





## PROJECT SUMMARY

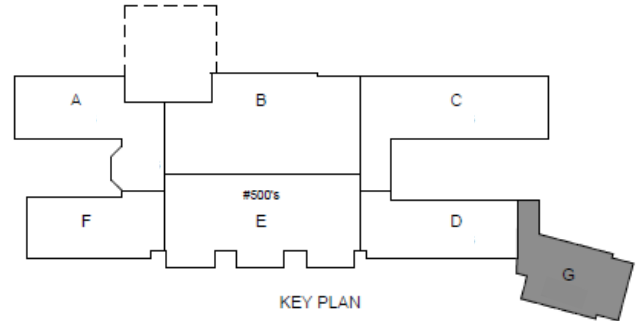
### Area G

#### June 2023 Progress

- First Floor Bearing CMU— 10%

#### Upcoming Progress

- First Floor CMU Bearing
- MEP Rough In





## PROJECT SUMMARY

### Area A

#### June 2023 Progress

- First Floor MEP Overhead Ongoing– 80%
- First Floor Interior Framing– 100%
- Exterior Wood Blocking – 100%
- Set Hollow Metal Frames– 50%
- Install Trusses– 100%
- Set Metal Deck– 90%
- Roof Blocking– 50%

#### Upcoming Progress

- Setting Hollow Metal Frames
- First Floor MEP Overhead Rough-in
- Framing Between Trusses
- Roof Blocking

