



New Construction

PROGRESS UPDATE
December 2022

Southeast Pre K-12 School



PROJECT SUMMARY

Site Development & Landscaping

December 2022 Progress

- Site
- Utilities
 - Continue Site Lighting Conduit– 75%
 - Underground Power Conduit– 75%
 - Underground Data Conduit– 90%

Upcoming Progress

- Begin light pole bases.
- Continue power conduit to transformer.



PROJECT SUMMARY

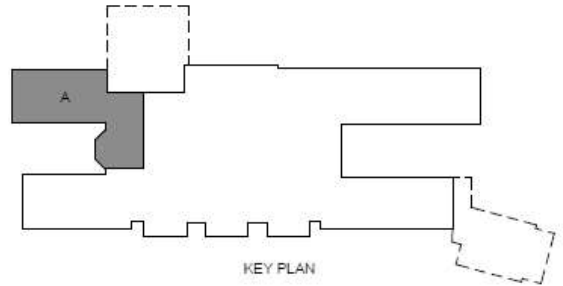
Area A

December 2022 Progress

- Foundations- 100%
- Electric Underground– 40%

Upcoming Progress

- Underground Sanitary Piping
- Below Grade CMU

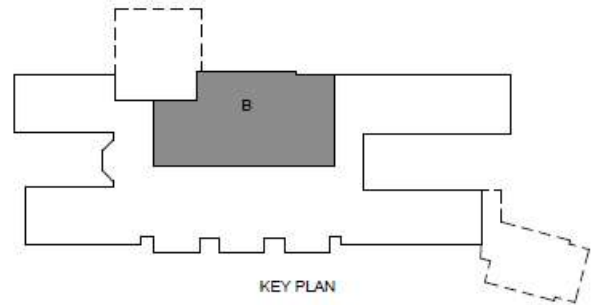


PROJECT SUMMARY

Area B

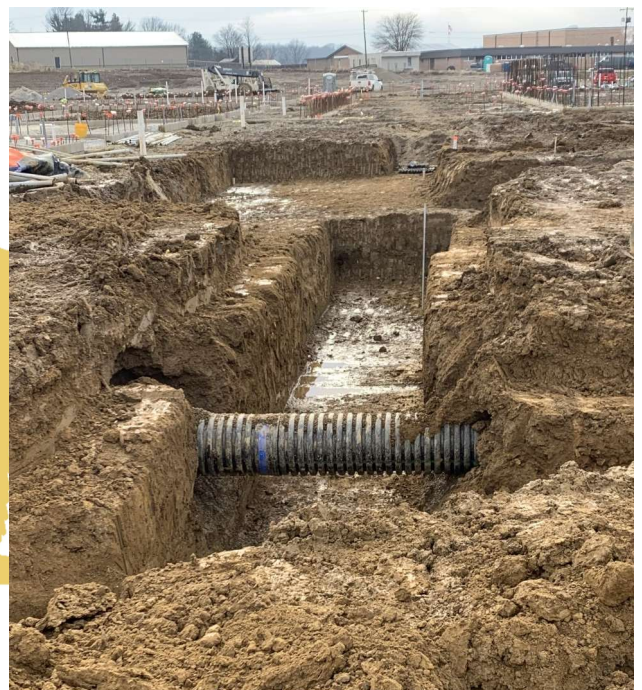
December 2022 Progress

- Foundations– 60%
- Underground Electrical Mains– 20%
- Below Grade CMU– 10%



Upcoming Progress

- Continuing Foundations and Underground Electrical Mains.

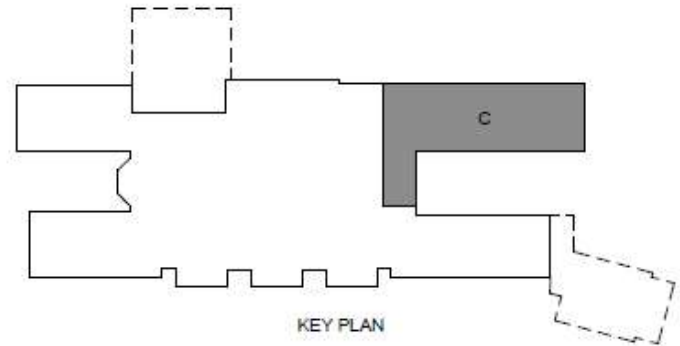


PROJECT SUMMARY

Area C

December 2022 Progress

- Foundations– 100%
- Sanitary Pipe Installation– 100%
- Underground Electric– 95%
- Below Grade CMU– 100%
- Slab on Grade Preparation– 40%



Upcoming Progress

- Continuing Slab on Grade preparation.
- Begin CMU Walls.

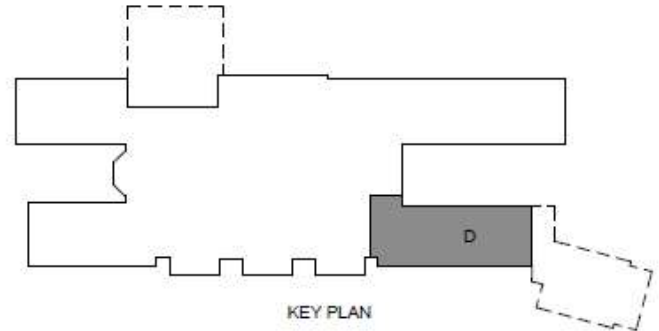


PROJECT SUMMARY

Area D

December 2022 Progress

- Foundation– 100%
- Underground Sanitary– 100%
- Underground Electrical Mains– 100%
- Underground Branches Elect.– 20%
- Below Grade CMU– 100%
- Backfill and Foam Board Installation– 10%



Upcoming Progress

- Continue underground electrical branches.
- Begin laying stone for Slab on Grade.



PROJECT SUMMARY

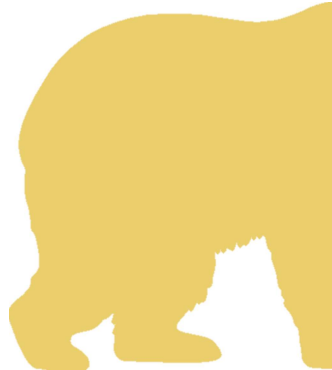
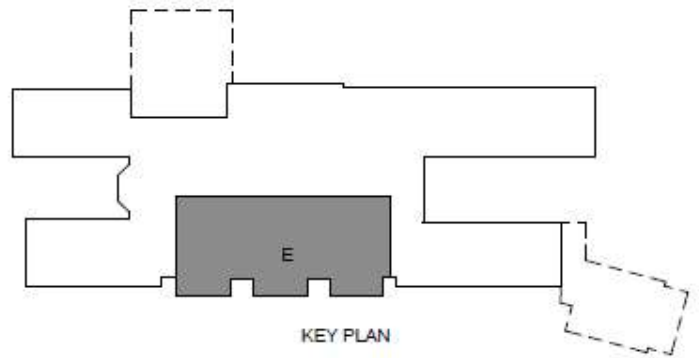
Area E

December 2022 Progress

- Foundation– 100%
- Underground Sanitary– 40%
- Below Grade CMU– 100%

Upcoming Progress

- Continue Sanitary Piping

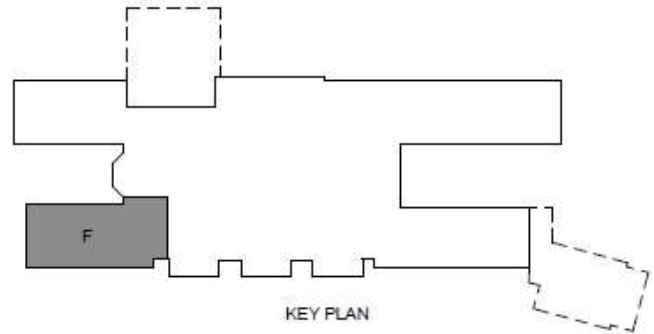


PROJECT SUMMARY

Area F

December 2022 Progress

- Foundation– 100%
- Underground Sanitary– 100%
- Below Grade CMU– 80%



Upcoming Progress

- Continue below grade CMU.
- Begin Underground Electrical Mains.



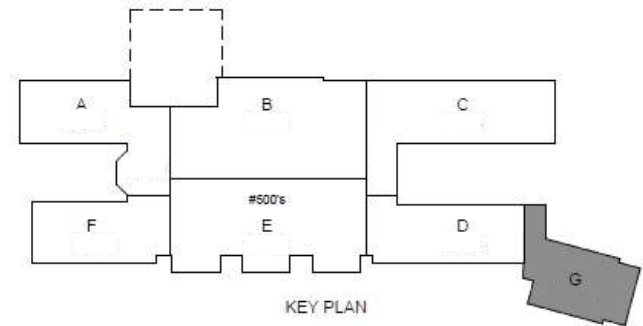


PROJECT SUMMARY

Area G

December 2022 Progress

NWP



Upcoming Progress

- Begin foundations, underground sanitary and underground electric.

