



New Construction

PROGRESS UPDATE

April 2023

Southeast Pre K-12 School



PROJECT SUMMARY

Site Development & Landscaping

April 2023 Progress

- Site
- Utilities
 - Continue Site Lighting Conduit– 75%
 - Underground Power Conduit– 75%
 - Underground Data Conduit– 90%
 - Light Pole Bases Installation– 80%
 - Water Line Installation– 30%
 - Underground Plumbing Installation– 100%
 - Below Grade CMU at Pumphouse– 100%

Upcoming Progress

- Continue Installing Water Line
- Begin Installing Pumphouse Water Lines
- Continue Installing Underground Power Conduit



PROJECT SUMMARY

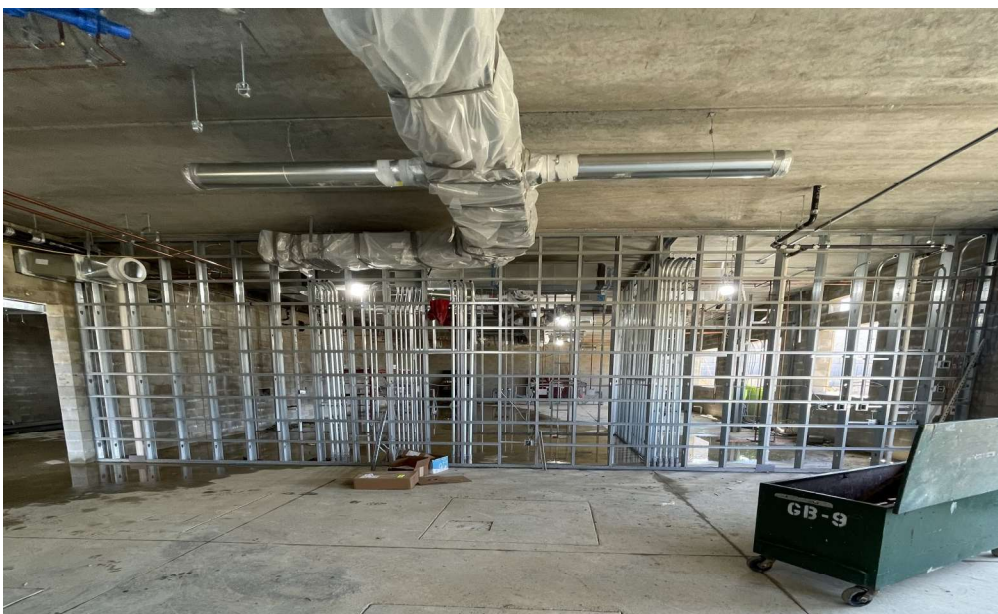
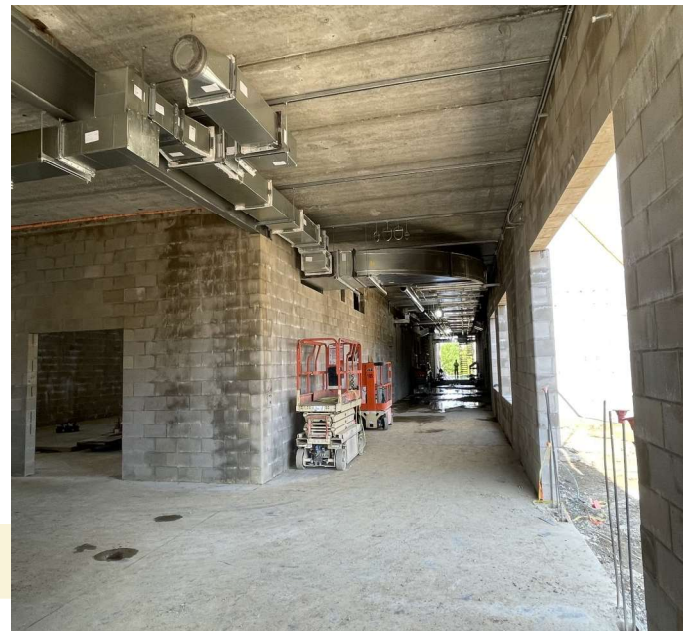
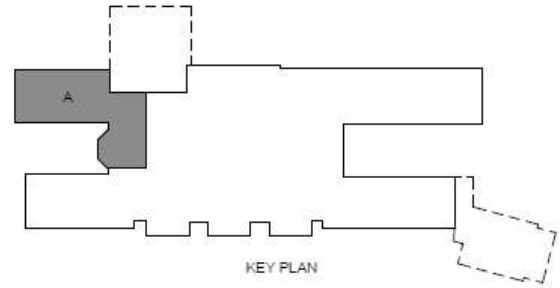
Area A

April 2023 Progress

- Second Floor Bearing CMU— 80%
- First Floor MEP Overhead Ongoing— 80%
- Interior Metal Framing— 65%
- Exterior Wood Blocking Ongoing— 50%
- Set Hollow Metal Frames— 30%

Upcoming Progress

- Second Floor CMU Bearing
- Setting Hollow Metal Frames
- Interior Metal Framing
- Exterior Wood Blocking
- First Floor MEP Overhead Rough-in



PROJECT SUMMARY

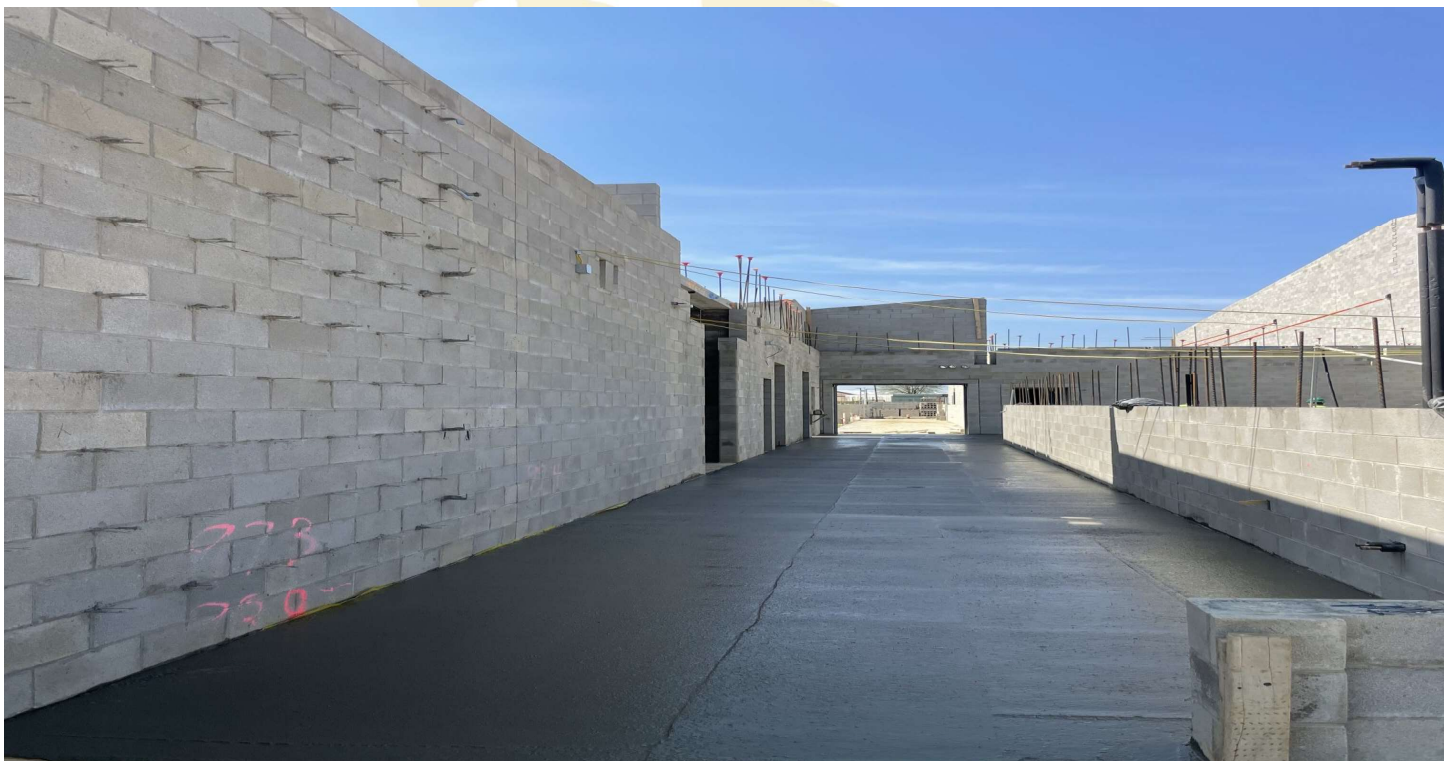
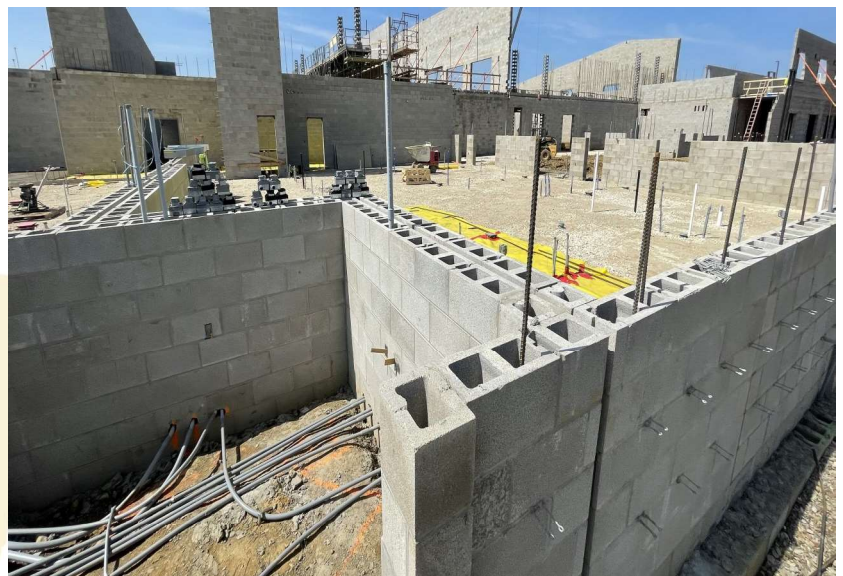
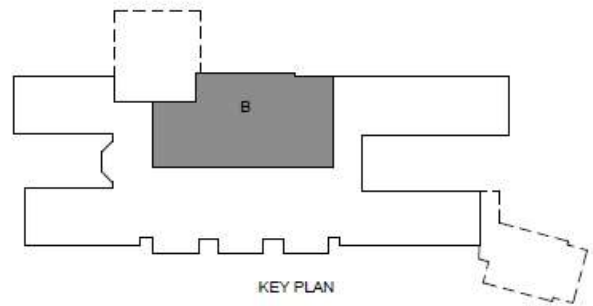
Area B

April 2023 Progress

- Foundations– 95%
- Below Grade CMU– 80%
- Branch Conduit– 50%
- Pour Partial Slab on Grade– 10%

Upcoming Progress

- Continue Bearing CMU
- Branch Conduit
- Continue Slab on Grade

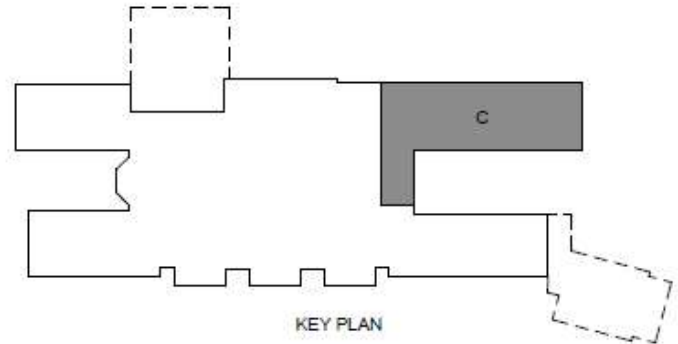


PROJECT SUMMARY

Area C

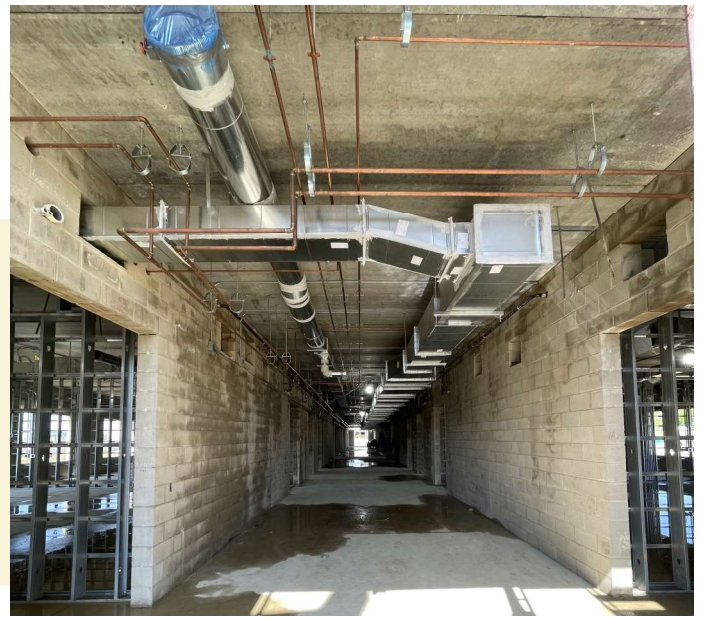
April 2023 Progress

- Second Floor CMU Bearing– 55%
- First Floor MEP Overhead Ongoing– 80%
- Interior Metal Framing– 70%



Upcoming Progress

- Second Floor CMU Bearing
- First Floor MEP Overhead Rough-in
- Interior Metal Framing

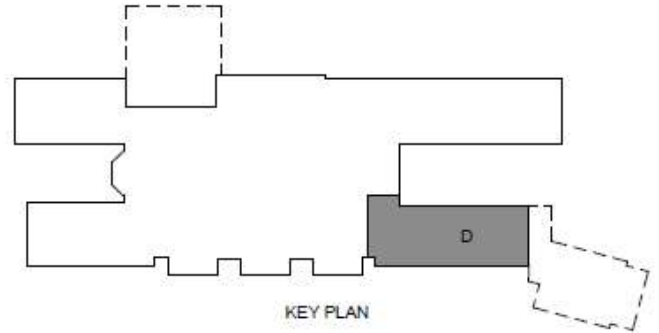


PROJECT SUMMARY

Area D

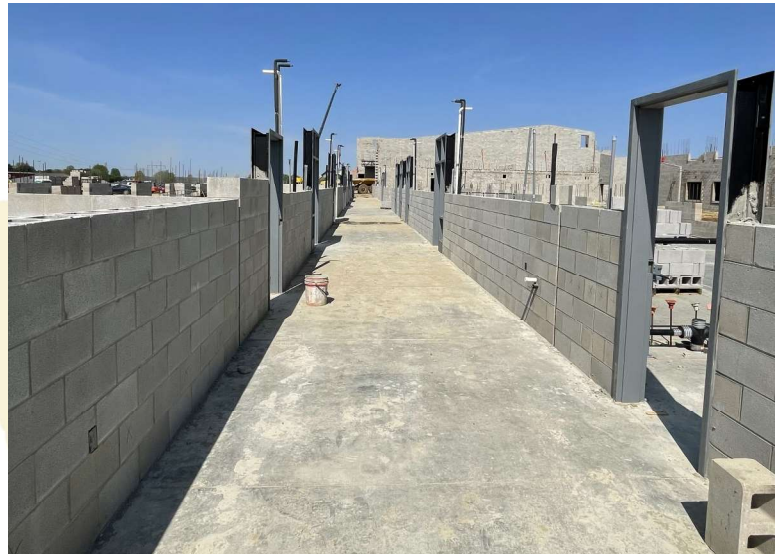
April 2023 Progress

- Exterior Bearing CMU – 30%
- Set Hollow Metal Frames– 80%



Upcoming Progress

- Exterior Bearing CMU
- MEP Rough – In



PROJECT SUMMARY

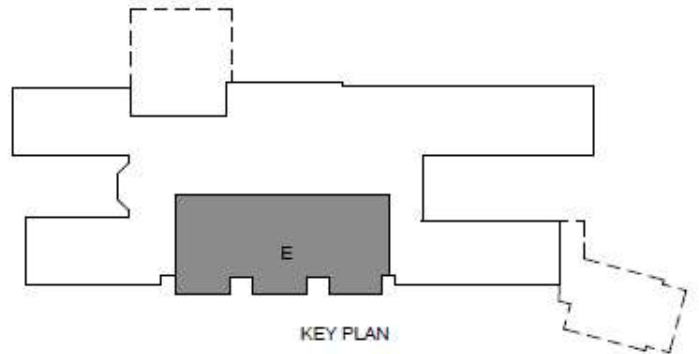
Area E

April 2023 Progress

- CMU to Bearing– 60%
- Set Music Room Precast Planks– 100%

Upcoming Progress

- Continue CMU to Bearing



PROJECT SUMMARY

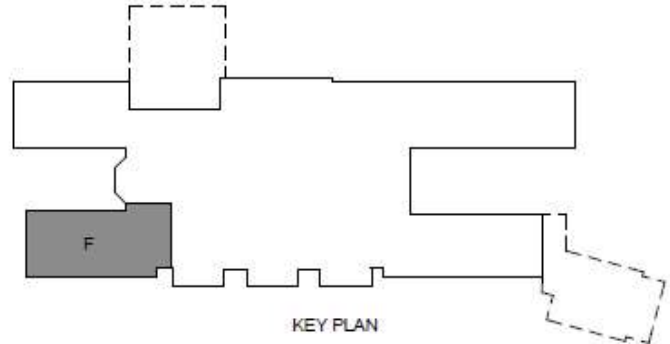
Area F

April 2023 Progress

- Exterior Bearing CMU – 75%

Upcoming Progress

- Continue Bearing CMU



PROJECT SUMMARY

Area G

April 2023 Progress

- First Floor Bearing CMU– 10%

Upcoming Progress

- First Floor CMU Bearing
- MEP Rough In

